



SEVENTH MEETING OF THE PACIFIC METEOROLOGICAL COUNCIL (PMC-7)

## AGENDA ITEM: 21

# Title: Update and Progress of the Pacific Partners Coordination Mechanism (PPCM)

*Presenter: Tessa, Tafua, World Meteorological Organization (WMO)*



## Purpose of the Paper:



1. To present an update on the status of activities for the dashboard, discuss challenges and possible solutions with PMC members and partners.



2. Aims to enhance collaboration for hydrometeorological projects in the Pacific Islands region.

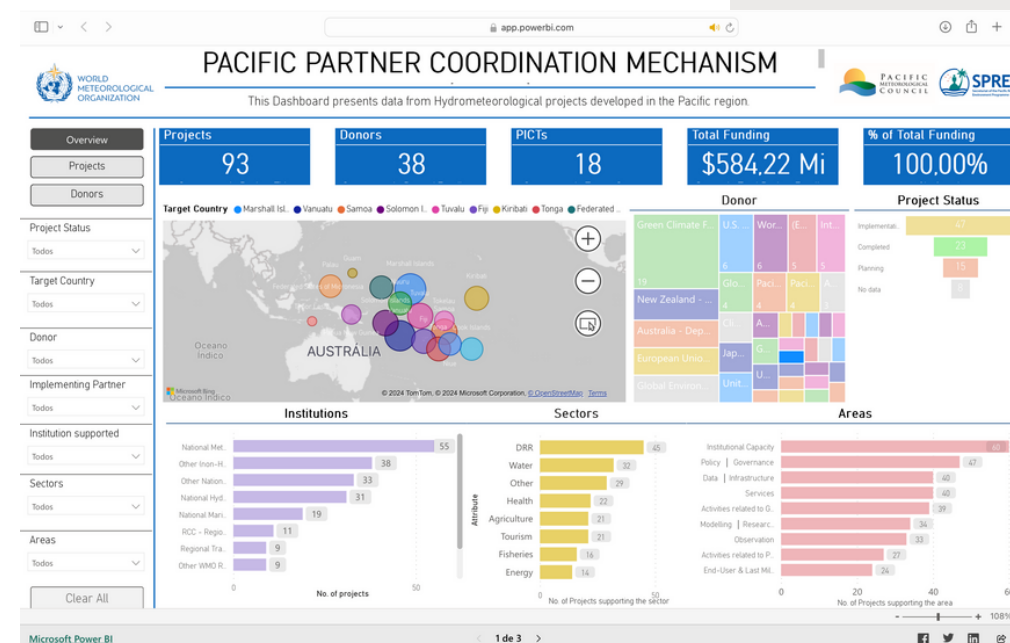


# Background:

- Hydromet projects play a crucial role in advancing global climate action.
- Several development partners are actively involved in supporting weather, water, and climate information services (WWCIS),
- Complex landscape of projects.
- Poor collaboration among partners at various levels has led to inefficient use of resources and duplication of efforts, raising concerns about the effectiveness of development financing.

Pacific Partner Coordination Mechanism (PPCM), launched in 2023.

- PPCM aims to strengthen collaboration among stakeholders in the Pacific region by promoting information sharing, aligning partner objectives with national and regional priorities, and ensuring the sustainability of interventions.





## Objectives:



1. Update the council on the status of activities of PPCM.



2. Share main challenges faced on updating the information on the PPCM.



3. Provide recommendations to ensure the sustainability of the PPCM.





# PACIFIC PARTNER COORDINATION MECHANISM

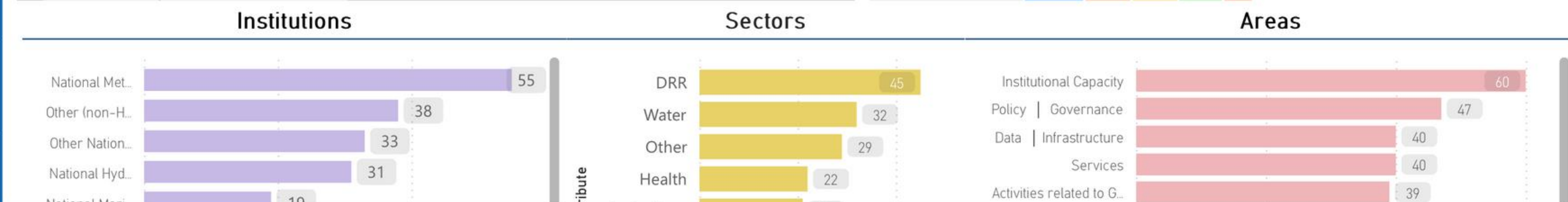
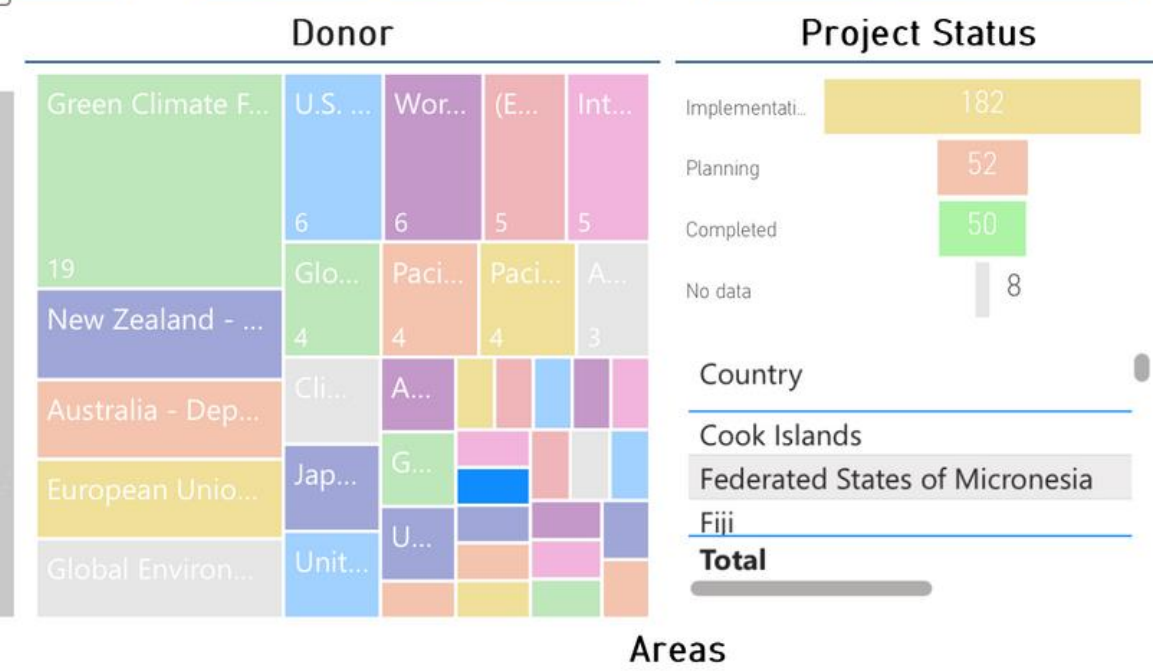
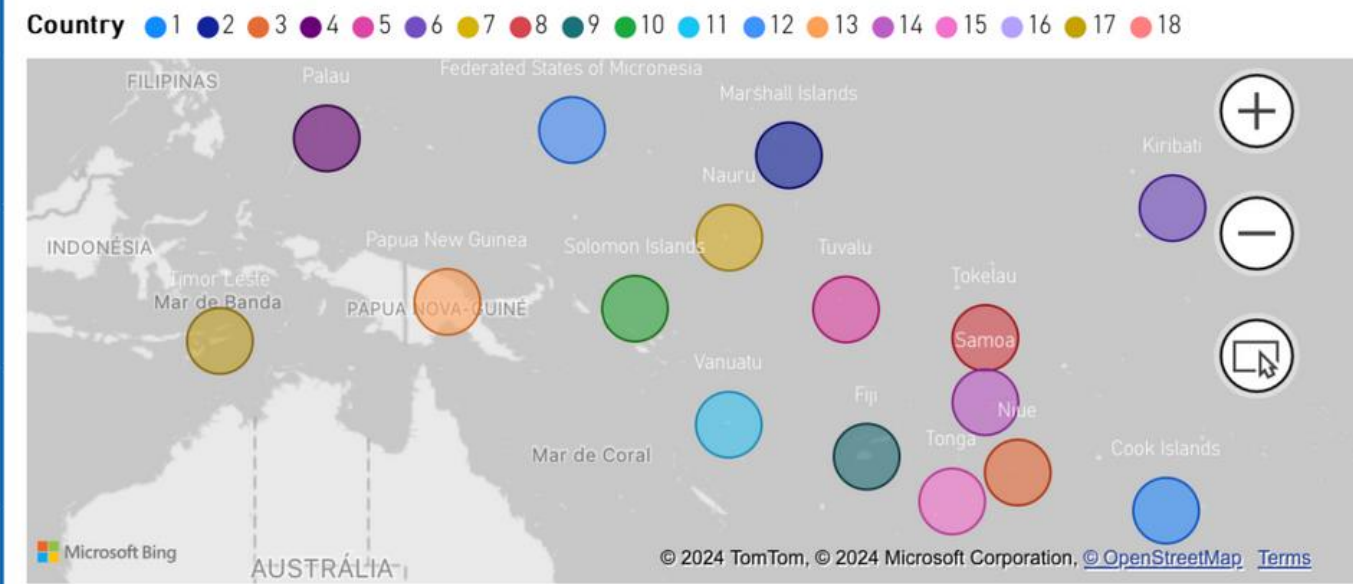


This Dashboard presents data from Hydrometeorological projects developed in the South Pacific region.

- Overview
- Projects
- Donors



- Project Status
- Todos
- Country
- Todos
- Donor
- Todos
- Implementing Partner
- Todos
- Institution supported
- Todos
- Sectors
- Todos



Check PPCM Dashboard





# Total Funding Amount for each country



1. Update the council on the status of activities of PPCM.

- The aim for 2024 was to enhance the quality of the data displayed, especially regarding the total budget dedicated to each country.
- The past version of the dashboard had inflated figures on the country layer because there was no data on the country allocation for such projects.
- Focal points in each country were invited to provide such information, together with updated and new information in projects.



2. Share main challenges faced on updating the information on the PPCM.

- However, it getting responses from focal countries and partners has been challenging .



3. Provide recommendations to ensure the sustainability of the PPCM.

- In order for the Dashboard to remain relevant and updated, we encourage members and partners to update focal points (2) should they have changed and to readily update the dashboard



# Alignment with Early Warning for All databases:



1. Update the council on the status of activities of PPCM.



2. Share main challenges faced on updating the information on the PPCM.



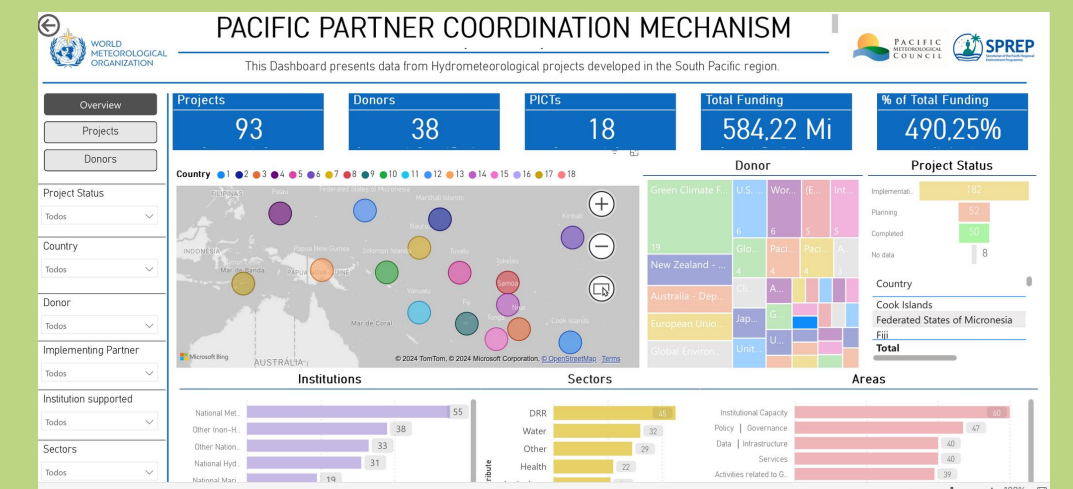
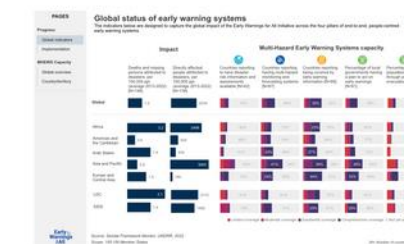
3. Provide recommendations to ensure the sustainability of the PPCM.

- The EW4All initiative is working on data visualization tools to support the initiative. The database of projects for PPCM is one of the sources of information used to build such tools.

- After the release of a pilot EW4All database on projects, a second phase of alignment will be carried out to ensure PPCM has updated and accurate data.

## Early Warnings for All Dashboard

The Early Warnings for All Initiative dashboard aims at tracking progress, informing decision-making and measuring success as key elements for achieving its five-year goal of the Early Warnings for All Initiative: to ensure that all people on Earth are covered by early warning systems by 2027.







## Pilot country climate-related projects dashboard:



1. Update the council on the status of activities of PPCM.

- Countries have requested the development of a similar layout that allows them to input their own projects and programs, which can assist in updating the PPCM dashboard



2. Share main challenges faced on updating the information on the PPCM.

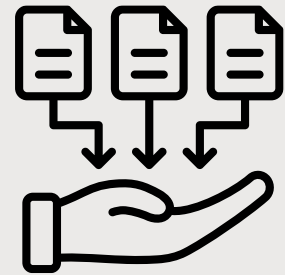


3. Provide recommendations to ensure the sustainability of the PPCM.

- This is now in discussion with Vanuatu as the first country that engaged the team for support in setting up a similar tool



## Challenges:



### Data availability



The key challenge faced over the past year is the collecting of new information or data from member countries and partners.

- Partners and Members to assign focal points to update their respective country or agencies information.
- Members to update data on their respective projects so its accurate.
- Data gathering period extended: February to June of each year.



### Resources



Engagement with partners and members was also constrained due to lack of dedicated resources.

WMO Resource Mobilisation and Development Partnerships Office is recruiting a staff member to perform regional partnerships activities, including PPCM.





## Recommendations:



Note the status of the platform (progress, next steps and challenges).



Note the recommendations on how the dashboard can be improved and updated

Focal points  
committed to  
the data  
sharing  
process

Data gathering  
process  
extended:  
Feb-Jun

Dedicated staff  
to partner  
mechanisms,  
including  
PPCM