

*Working Together
to Realize the
Rights of Persons
with Disabilities*

**“Disability
Inclusive
Climate
Services”**



Pacific Disability Forum

A partnership of Pacific organisations of and for persons with disabilities



**Write down who you think are
vulnerable groups of people**



Check in

Understanding the concept of Disability...

Convention on the Rights of Persons with Disabilities Definition:

Persons with Disabilities includes those in long term physical, mental, intellectual, sensory impairments which in interaction with various barriers may hinder their full and effective participation in society on equal basis with others

The Rights Based Understanding

Long-term impairment

(sensory, physical, intellectual, psychosocial, multiple)

+

Barriers

(environmental, attitudinal, or institutional)

=

Hindering participation in, or accessing climate programs and services



Can you count how many people with a disability are in this picture?

Impact Moment

Game of Life

- Break in 5 groups
 - Visual impairment
 - Hearing impairment
 - Physical impairment
 - Intellectual impairment
 - Psychosocial impairment

- **Scenario Title: Cyclone Alert in the Pacific – A Race Against Time**
 - **Background:** It is the start of cyclone season, and the Pacific region has been monitoring a developing tropical disturbance. The Meteorological Department has issued a cyclone alert for a Category 3 cyclone expected to make landfall within 48 hours. The Met Department now needs to disseminate this crucial information to the public through multiple channels.
 - **Meteorological Department's Actions:**
 - **Monitoring the Storm:** The Met Department tracks the storm as it grows in intensity. Satellite data and forecasting models predict that it will develop into a Category 3 cyclone. They estimate that the cyclone will make landfall within two days, impacting coastal areas, triggering storm surges, and causing severe flooding.

- **Issuing the Early Warning:** The Met Department drafts an official cyclone warning and sends it to relevant authorities (National Disaster Management Offices, media outlets) for immediate dissemination. The warning includes:
 - The cyclone's expected track
 - The areas likely to be affected
 - Evacuation recommendations for vulnerable areas
 - Safety instructions such as stockpiling food and water, securing property, and preparing for potential power outages
- **Channels of Dissemination:** The warning is distributed through several platforms:
 - Radio and television broadcasts
 - SMS alerts to mobile phones
 - Social media posts on official government pages
 - Website updates on Met Department and NDMO websites
 - Public announcements via loudspeakers in town centers and coastal villages



What does Pre-Conditions mean?

A condition that must be fulfilled before other things can happen or be done.





Pre-Conditions to Inclusion

Accessibility

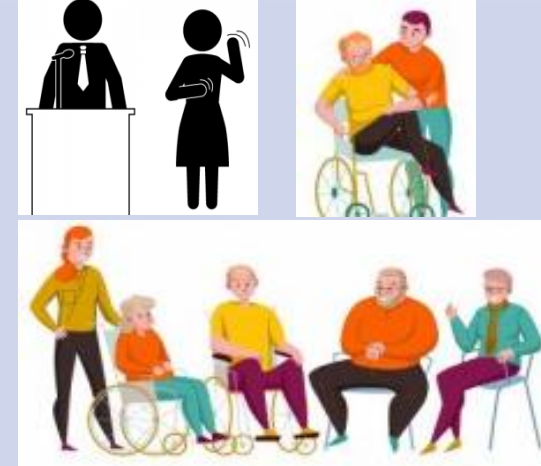


RIGHTS OF PERSONS WITH DISABILITIES

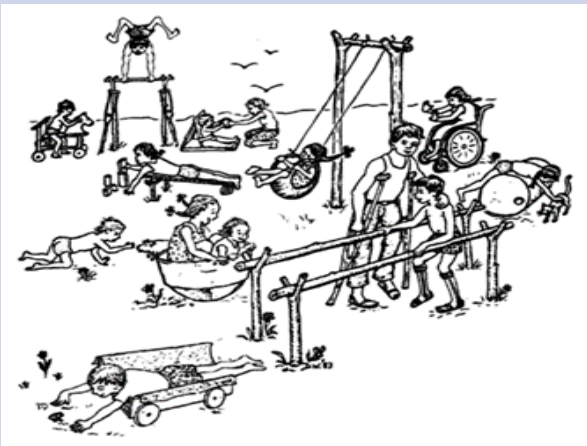
Assistive Device



Support Systems



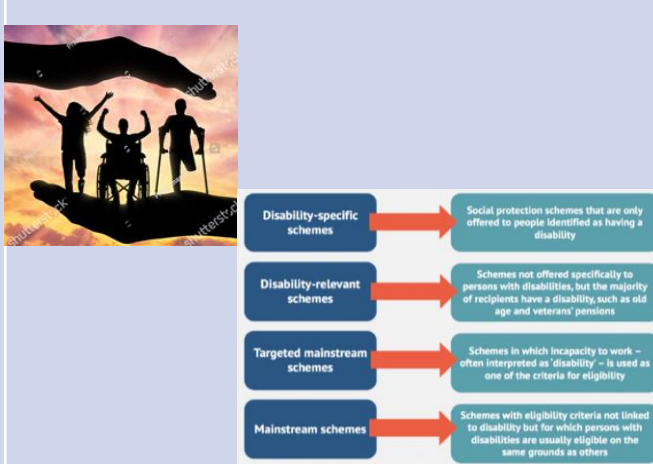
CBID



Non-Discrimination



Social Protection



Convention on the Rights of Persons with Disabilities

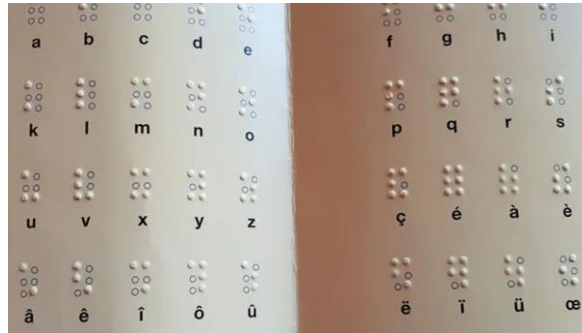


SUSTAINABLE DEVELOPMENT GOALS



Accessibility

“Accessible” means a person with a disability is afforded the opportunity to acquire the same information, engage in the same interactions, and enjoy the same services as a person without a disability in an equally effective and equally integrated manner, with substantially equivalent ease of use.



Convention on the Rights of Persons with Disabilities



SUSTAINABLE DEVELOPMENT GOALS



Pacific Disability
Forum

A partnership of Pacific organisations of and for persons with disabilities

DISASTER RISK MANAGEMENT

PREPAREDNESS	RESPONSE	RECOVERY
Early Warning System – Weather Information	Evacuation Centers	DATA (location, age, gender, impairments, etc)
Community Disaster Risk Management Plan – Simulation Exercise	Transport	Recovery Programs Evacuation Centres Government Services
Communication	Information	
Transport & Mapping	Humanitarian Assistances	



Assistive Devices

Assistive devices and technologies are those whose primary purpose is to improve an individual's functioning and independence to facilitate participation and to enhance overall well-being. They can also help prevent further impairments and secondary health conditions.





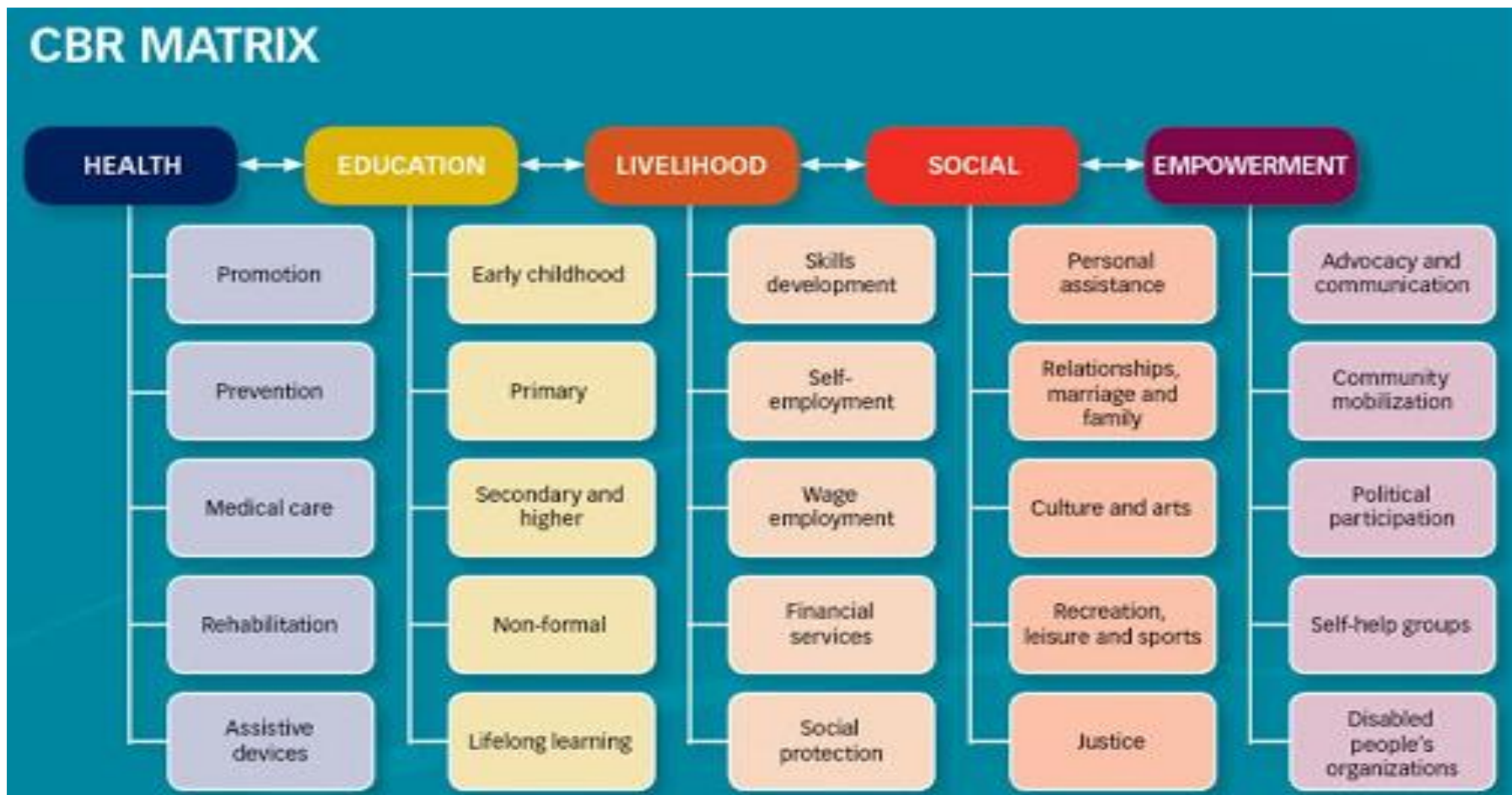
Assistive Devices

PREPAREDNESS	RESPONSE	RECOVERY
Procurement of Assistive Devices	Needs Assessment to be inclusive of type of Assistive Device needed	Referral pathways to get Assistive devices or fix assistive devices
Mapping of persons with disabilities and listing of Assistive Devices needed.	Assistive Devices as part of humanitarian Aid	
	Stockpile of Assistive Devices	



Pacific Disability Forum
A partnership of Pacific organisations of and for persons with disabilities

Community Based Inclusive Development



Convention on the Rights of Persons with Disabilities



**Pacific Disability
Forum**

A partnership of Pacific organisations of and for persons with disabilities

Community Based Inclusive Development

PREPAREDNESS	RESPONSE	RECOVERY
Not included in CBDRM processes	Access to services to all response actors	Access to all Government services – Health, Education, Agriculture etc
Community disaster committee should include a rep from OPDs	have access to support services through sign language, PA etc	Discrimination of persons with disabilities in communities



**Pacific
Disability
Forum**
A partnership of Pacific organisations of
and for persons with disabilities

Social Protection



Convention on the
Rights of
Persons with
Disabilities



Why do persons with disabilities need social protection?

- Social protection is important for persons with disabilities as it provides a source of income.
- Reduce the impact of poverty and exclusion.
- Social protection can help cover the extra cost of disability.
- Social protection can help purchase assistive devices/technologies.
- It provides access to services such as transportation, health, education, employment, etc
- Assists in their livelihood for e.g. shopping vouchers to buy groceries.
- Assist in purchase of education related costs.
- Pay for transportation to hospitals and purchasing of medication.





Pacific Disability Forum
A partnership of Pacific organisations of and for persons with disabilities

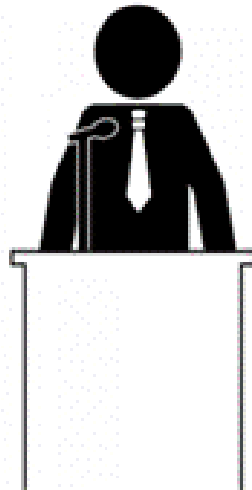
Support Services

Support Systems/Service are provided to and for Persons with Disabilities to enable participation on an equal basis with others with and without disabilities. These include but not limited to:

Personal assistant and Carers

Sighted guides

Sign Language Interpreters



Convention on the Rights of Persons with Disabilities



SUSTAINABLE DEVELOPMENT GOALS



Pacific Disability
Forum



Support Services

Support Systems/Service are provided to and for Persons with Disabilities to enable participation on an equal basis with others with and without disabilities.

These support systems and services also aim to eliminate the barriers that persons with disabilities face in their daily lives and ensure that they have access to the same opportunities, rights, and benefits as everyone else.



**Pacific
Disability
Forum**
A partnership of Pacific organisations of
and for persons with disabilities

DISASTER RISK MANAGEMENT

PREPAREDNESS	RESPONSE
Awareness	Disaster Management Committee,
Engagement with Humanitarian Partners such as EMCI, Red Cross, T.T.V, TMO, MOE	Executive Committee, Councilors, Head of Departments, Families.
Training of the PUNA'S. Integration of the PWD into DRM's & Policies.	PUNA, MET SERVICES, Police, EMCI, Air Raro, Red Cross, Vodafone, TMO (Mental Health), PTI (Counselling)



**Pacific
Disability
Forum**
A partnership of Pacific organisations of
and for persons with disabilities

Non-Discrimination



Convention on the
Rights of
Persons with
Disabilities



Pacific Disability
Forum

Non-Discrimination

Non-discrimination refers to the principle of treating individuals equally and without prejudice, regardless of their background, characteristics, or circumstance



Email

- info@pacificdisability.org
- pdfsec@pacificdisability.org

Phone

- 773 0200



Pacific Disability Forum

A partnership of Pacific organisations of and for persons with disabilities